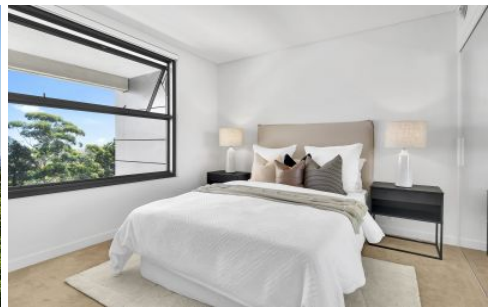


THE PROPERTY LAB



R214/200-220 Pacific Highway Crows Nest NSW

1 1 1

Presenting unique lifestyle convenience in a sought-after location, this apartment offers exceptional elevation with sweeping views, including glimpses of the city and harbour. This one bedroom apartment impresses with its light filled interiors, contemporary finishes and natural tones creating an ambiance of luxury and refinement.

- Open plan living and dining area provides plentiful natural light
- Expansive indoor/outdoor balcony perfect for entertaining
- Oversized bedroom equipped with a built-in robe
- Large study/media room ideal to consolidate home and office
- Gas kitchen with stone bench, Bosch appliances
- Reverse cycle ducted air conditioning and internal laundry

Type : Apartment

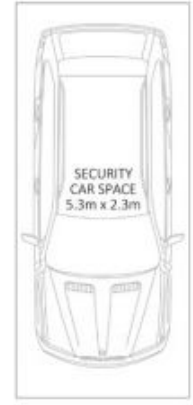
View : <https://www.thepropertylab.com.au/8271050>



Gerard Marino
1300 048 125

[For full version visit the website](https://www.thepropertylab.com.au)

<https://www.thepropertylab.com.au>



BASEMENT
No 111

R214/200 Pacific Highway, Crows Nest

Disclaimer: Plans shown are for presentation purposes and are not part of any legal document. All measurements and figures are approximate.