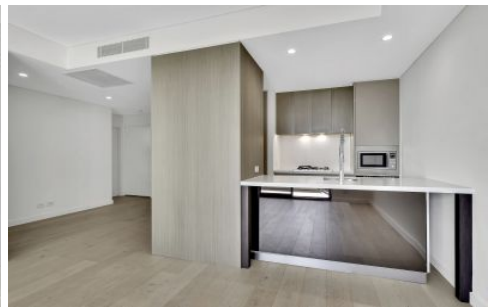


THE PROPERTY LAB



208/11 Victoria Street Roseville NSW

2  2  1 

Positioned within 'The Uptown' complex, this contemporary haven offers a low maintenance lifestyle of privacy. This outstanding apartment enjoys a peaceful position with leafy district views.

View : <https://www.thepropertylab.com.au/lease/nsw/north-shore-upper/roseville/residential/apartment/7959817>

- North facing, open plan living/dining space and expansive balcony
- Wide European Oak hardwood floorboards and carpeted bedrooms
- Gourmet stone kitchen with gas cooking, quality Miele appliances
- Two generous bedrooms have built-ins, master enjoys an ensuite
- European laundry with dryer plus ducted reverse air conditioning
- Smart control home automation system, secure video intercom entry



Gerard Marino
1300 048 125



LEVEL B2

208/11 Victoria Street, Roseville

THE **Property**LAB

Disclaimer: Plans shown are for presentation purposes and are not part of any legal document. All measurements and figures are approximate.