



15 Armstrong Street Willoughby NSW

3 2 1

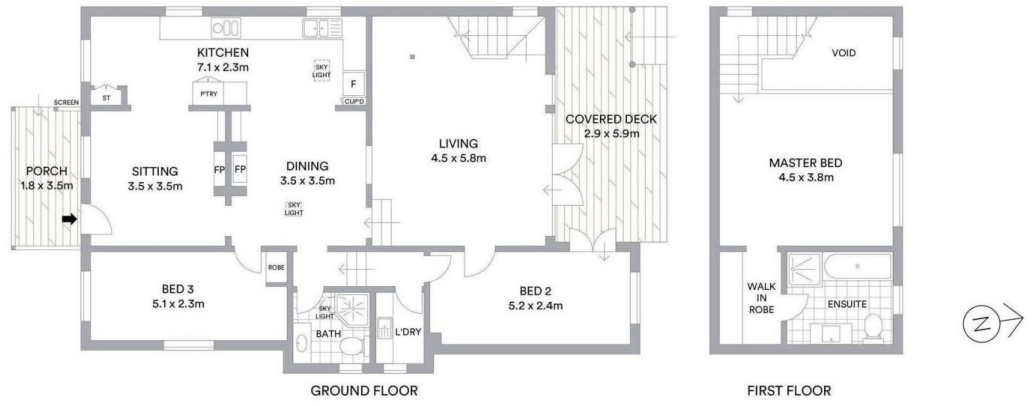
Blending timeless character with modern appeal, this c1920s home presents an idyllic family oasis revealing sunlit interiors adorned with elegant original features, set on a north to rear level parcel of land. Quietly located atop a quiet cul-de-sac this family home embodies grace, quality and idyllic serenity.

- Soaring ceilings, original timber, fittings and integrity
- Extensively and meticulously remodelled, flawless throughout
- Expansive designer kitchen, prestige appliances and finishes
- Split-level sunlit entertaining flows to a timber deck
- Stunning loft retreat, walk-in robe, ensuite, gabled ceiling
- Captivating landscaped, cottage style garden, verdant surrounds
- North aspect, cool in summer, warm in winter, cross

View : <https://www.thepropertylab.com.au/lease/nsw/north-shore-lower/willoughby/residential/house/7846619>



Gerard Marino
1300 048 125



Scale in metres. Indicative only. All information contained herein is obtained from sources we believe to be accurate. We cannot guarantee its accuracy. Interested persons should make and rely on their own enquiries.