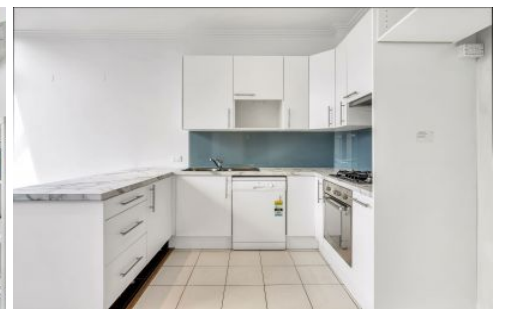
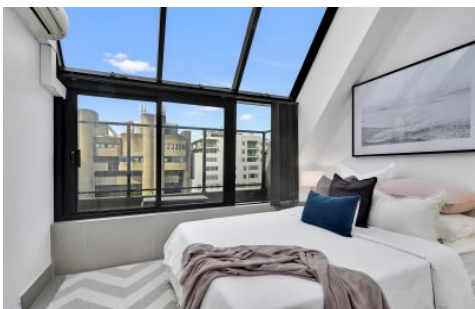


THE PROPERTY LAB



303/402-420 Pacific Highway Crows Nest NSW

2  2  1 

An elevated setting within The Atrium gives this spacious two bedroom apartment a prime position in the heart of Crows Nest. Light filled throughout and featuring over 73 sqm internal area, it offers a smart and modern living space with generous proportions and many quality finishes.

Type : Apartment
Building Size : 78 sqm
View : <https://www.thepropertylab.com.au/7733668>

- Open plan living and dining
- Master room with ensuite and walk-in robe
- Second bedroom with built-in storage
- Main bathroom with separate bath and shower
- Gas kitchen with dishwasher, ample storage
- Fantastic internal storage
- Security building, one undercover car space
- Top floor apartment, lift access, pet friendly
- Timber flooring throughout



Gerard Marino
1300 048 125

[For full version visit the website](https://www.thepropertylab.com.au)

<https://www.thepropertylab.com.au>



303/402-420 Pacific Highway, Crows Nest

Disclaimer: Plans shown are for presentation purposes and are not part of any legal document. All measurements and figures are approximate.

THE **Property** LAB