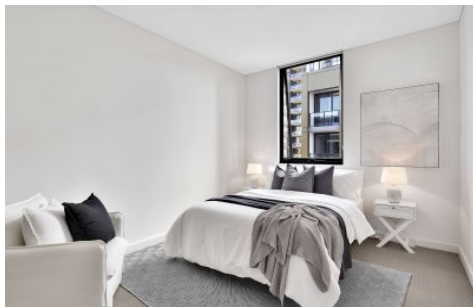


THE PROPERTY LAB



605/12 Half Street Wentworth Point NSW

1 1 1

Easy waterside living is yours to savour with this exceptional north facing one-bedroom apartment that's situated in the Yukon building right in the heart of The Waterfront Estate community.

High in style, yet low in maintenance, it's ideally suited to professionals, downsizers or investors on a journey for a quality well-connected home that has all of Wentworth Point's amenities at your fingertips.

- Security complex with lift and intercom access
- A large bedroom fitted with a walk in wardrobe
- Air-conditioned open plan layout with fresh modern decor
- Covered BBQ balcony area ideal for entertaining
- Modern gas kitchen equipped with quality s/s appliances
- Security basement car space with a lock-up cage
- Outdoor swimming pool

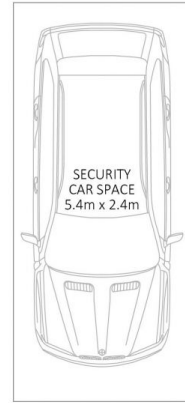
Price : \$ 580,000
Building Size : 86 sqm
View : <https://www.thepropertylab.com.au/sale/nsw/inner-west/wentworth-point/residential/apartment/7666118>



Gerard Marino
1300 048 125



Richard Adamski
1300 048 125



605/12 Half Street, Wentworth Point

Disclaimer: Plans shown are for presentation purposes and are not part of any legal document. All measurements and figures are approximate.

THE **Property**LAB