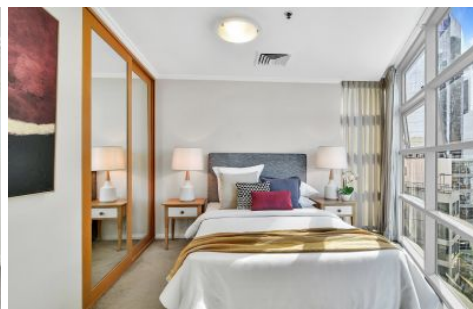


# THE PROPERTY LAB



**1104/93 Pacific Highway North Sydney NSW**

1  1  1 

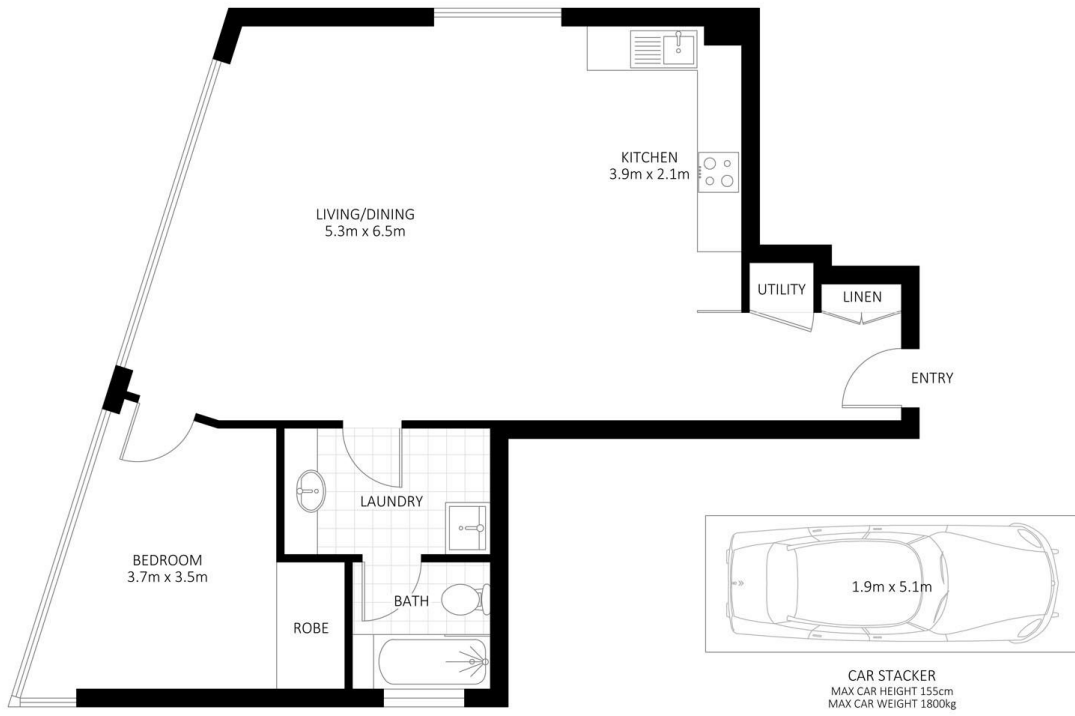
This one bedroom apartment captures impressive views and presents a fantastic entry level opportunity for those seeking an investment or first home. Delivering superb lifestyle convenience, it's an elevator ride to your morning coffee and caters to professionals seeking a lifestyle of sophistication and privacy in a convenient setting.

**View** : <https://www.thepropertylab.com.au/lease/nsw/north-shore-lower/north-sydney/residential/apartment/7291788>

- District views from the eleventh floor
- Spacious integrated living and dining area
- Floor to ceiling glass ensures plenty of natural light
- Spacious bedroom with built in robe
- Gas kitchen, dishwasher, quality appliances
- Complete bathroom with shower and bath combined
- Audio visual intercom, security building, air conditioning
- Secure parking, car stacker for small vehicle only
- Ready to live in and enjoy the benefits of a prime location
- Walk to buses, North Sydney CBD and major arterial



**Gerard Marino**  
1300 048 125



1104/93 Pacific Highway, North Sydney

Disclaimer: Plans shown are for presentation purposes and are not part of any legal document. All measurements and figures are approximate.

THE **Property** LAB