



14/38-40 Gould Avenue Lewisham NSW

2 1 1

Nestled towards the rear of a meticulously maintained building, this top floor, renovated apartment is in a quiet and convenient location, within walking distance to Dulwich Hill's shops, cafes and grocers

View : <https://www.thepropertylab.com.au/lease/nsw/inner-west/lewisham/residential/apartment/6198188>

Two bedrooms, built-in wardrobes and ceiling fans
Leafy treetop views of Morton Park from each room
Large undercover balcony with district views to Port Botany
Open plan living and dining room with air conditioning
Light filled modern kitchen with Westinghouse appliances
Bathroom with separate bath and shower
Polished timber flooring throughout
Large laundry with space for dryer and washing machine
Secure single lock up garage, ample visitor parking on site
Close to schools, shops and recreation facilities

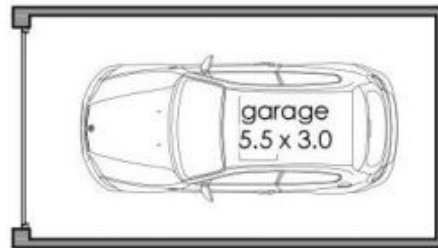
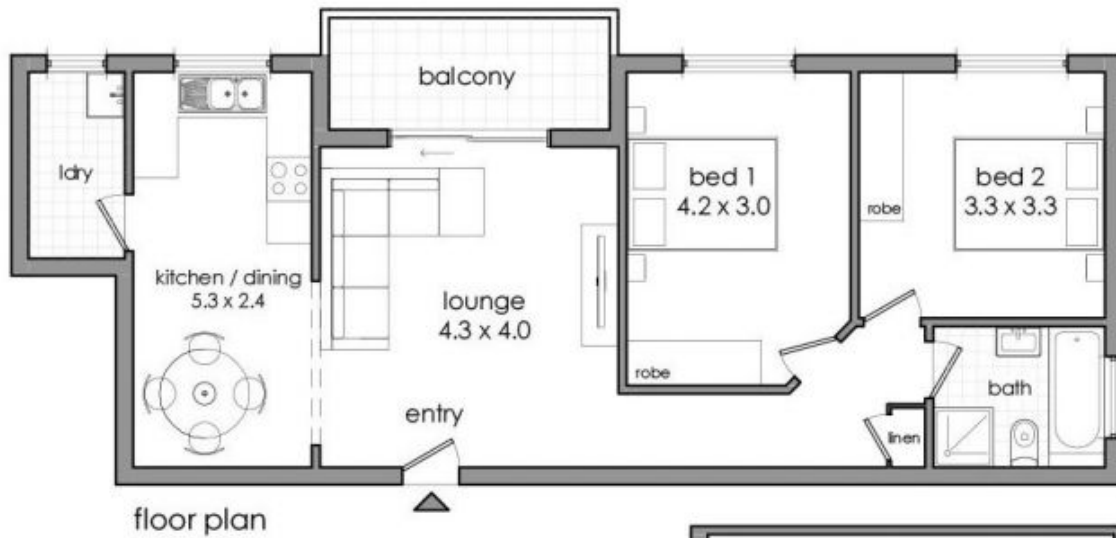


Gerard Marino
1300 048 125

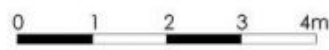


Daniel Beracochea
1300 048 125

With a leafy setting perched in the treetops, this apartment



14/38-40 Gould Avenue, Lewisham



This diagram is for illustrative purpose only. All measurements have been taken in the preparation, but no warranty is given as to the accuracy of the information. This document does not constitute any part of any offer or contract. Dimensions shown are approximate only. Prospective purchasers must rely on their own enquiries. Floor plan by Igar Nest-c 0410581809 / spmptic.com.au