



**4/696 Victoria Road Ryde NSW**

2 1 2

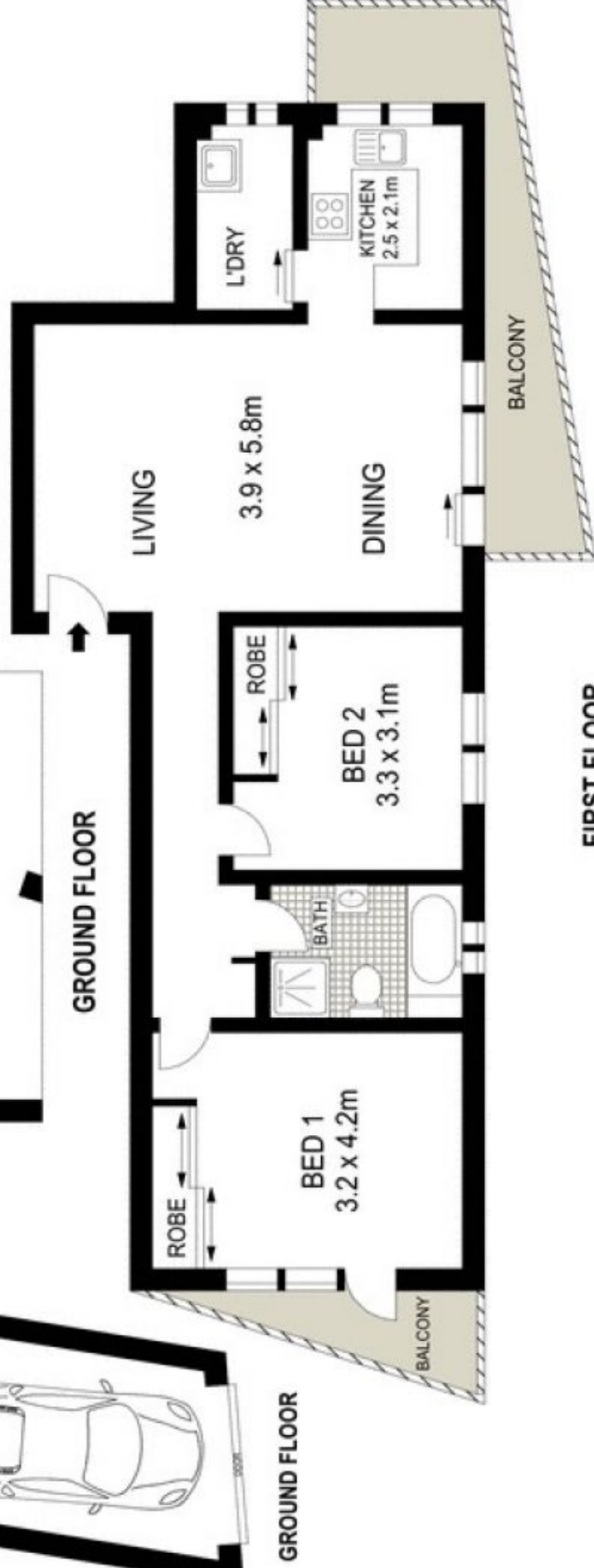
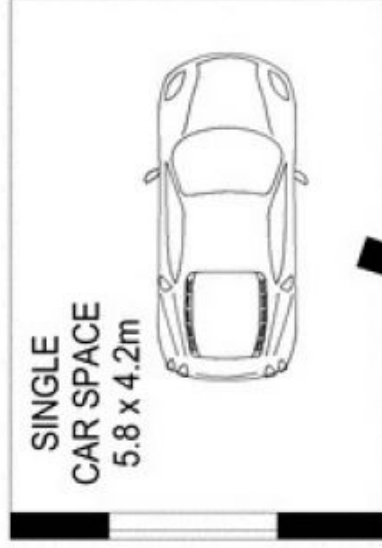
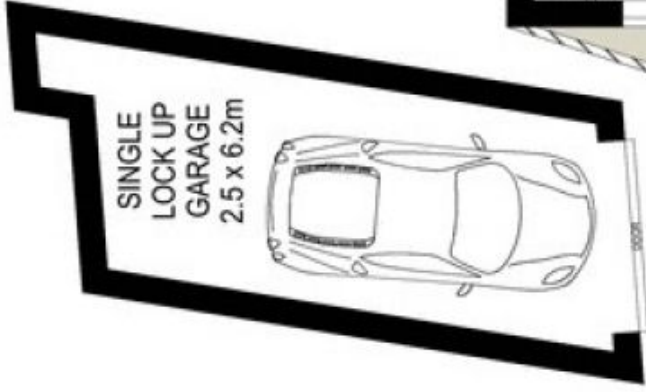
Impressively well proportioned and offering excellent value, this apartment illustrates convenient living. Updated to meet contemporary tastes and enhanced to increase liveability, this two bedroom apartment is filled with afternoon ambiance, privacy and comfort.

**View** : <https://www.thepropertylab.com.au/lease/nsw/northern-suburbs/ryde/residential/unit/6198178>

- Generous living and dining area
- Oversized bedrooms, both with built-ins
- Main bedroom with double glazed windows
- Open plan kitchen, electric cook top
- Bathroom with shower over bath
- Dual balcony access from living and main bed
- Internal laundry with linen storage
- Boutique security block of just six apartments
- Lock up garage plus additional undercover car space
- Short stroll to Top Ryde shopping centre and its attractions



**Gerard Marino**  
**1300 048 125**



Scale in metres. Indicative only. Dimensions are approximate. All information contained herein is gathered from sources we believe to be reliable. However we cannot guarantee its accuracy and interested persons should rely on their own enquiries.



4/696 Victoria Road, Ryde

**THE Property LAB**