



14/446 Pacific Highway Lane Cove NSW

2 1 2

With respect to the government's restrictions around open homes and to help stop the spread of COVID-19, our properties will be open by appointment. Please contact the listing agent for more information.

Occupying a top floor position at the very rear of the building, this generously sized two bedroom apartment benefits from a lifestyle of convenience, privacy and comfort, all combined into the perfect setting. This sensational address has uninterrupted views stretching across to the Blue Mountains and is an ideal proposition for both investors and owner occupiers alike.

Unique outdoor entertainers terrace
Generous proportions benefit from quiet interiors
Open plan living and dining areas
Two generous bedrooms include built-ins

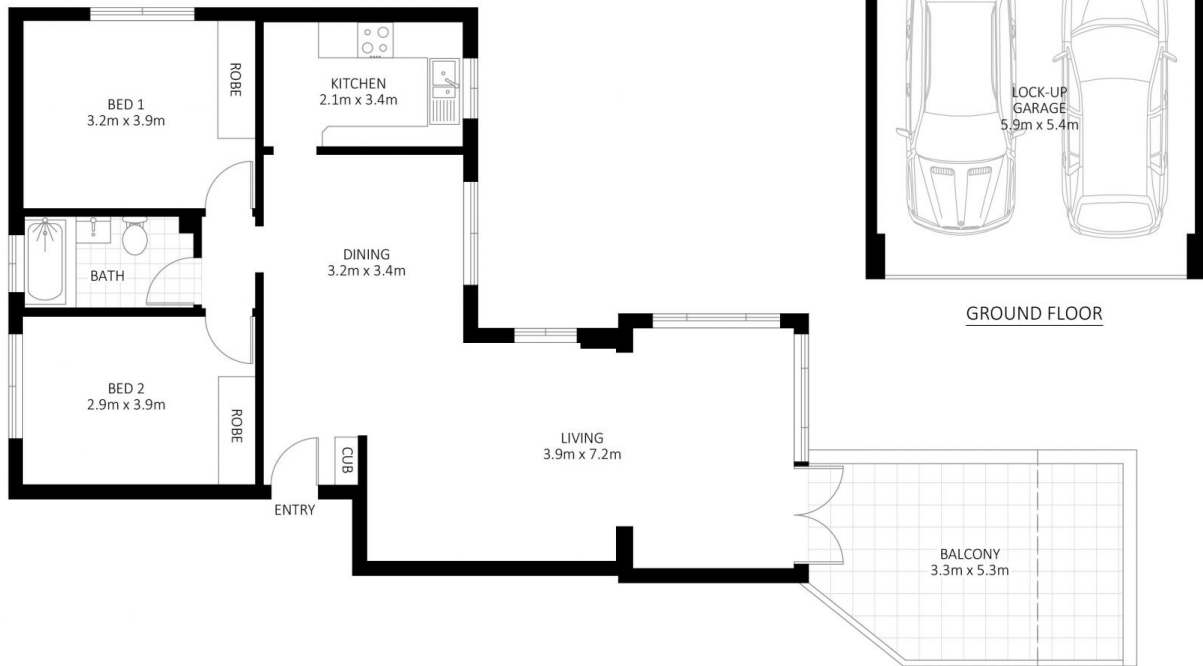
Price : \$ 870,000
Land Size : 128 sqm
View : <https://www.thepropertylab.com.au/sale/nsw/north-shore-lower/lane-cove/residential/apartment/6198150>



Gerard Marino
1300 048 125



Daniel Beracochea
1300 048 125



14/446 Pacific Highway, Lane Cove

Disclaimer: Plans shown are for presentation purposes and are not part of any legal document. All measurements and figures are approximate.

THE **Property** LAB