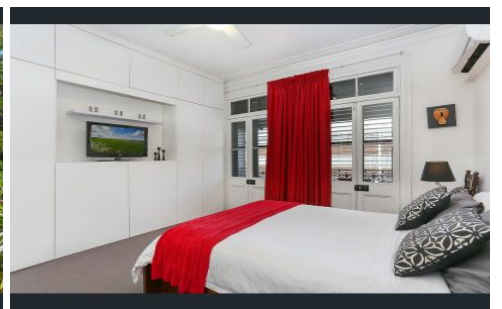
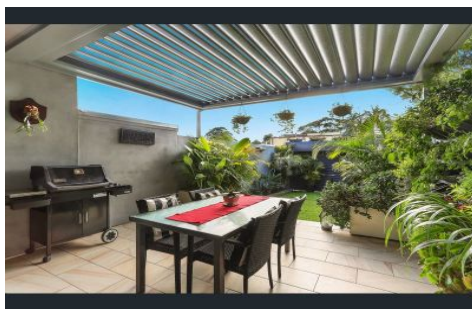


THE PROPERTY LAB



522 Darling Street Rozelle NSW

3 2 1

A piece of perfection in the cosmopolitan heart of Darling Street, this impressive terrace incorporates leading edge design mixed with classical grandeur, it is sure to appeal to the most discerning of tenants seeking a lifestyle of luxury and privacy all in the picture perfect setting.

View : <https://www.thepropertylab.com.au/lease/nsw/inner-west/rozelle/residential/terrace/6198095>

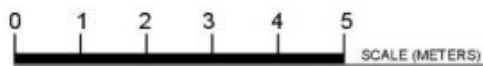
Landscaped all weather entertainers terrace
Three bedrooms, built-ins and balconies
Two luxurious designer bathrooms
Elegant living and dining rooms, gas marble fireplaces
Soaring internal ceilings, internal garden atrium, underfloor heating
Gourmet kitchen, gas cooktop, Euro appliances, walk in pantry
Bi-folds open to a terrace with auto Vergola, verdant garden surrounds
Skylit staircase, ample storage throughout



Gerard Marino
1300 048 125



Daniel Beracochea
1300 048 125



All the information provided has been collected from reliable sources but cannot be guaranteed for accuracy. Interested persons should rely on their own enquiries. All dimensions are approximate and indicative only.

THE **Property** LAB

522 Darling St, Rozelle