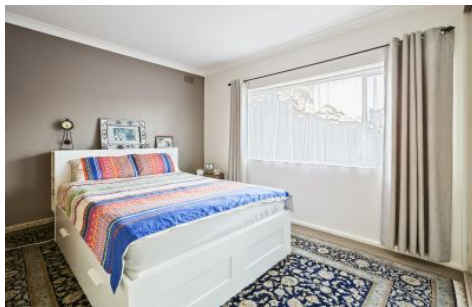


THE PROPERTY LAB



6/13 Station Street Naremburn NSW

2  1  1 

Benefiting from an open plan, light filled living area occupying a northerly perspective, this excellent apartment offers style, privacy and convenience in one of the North Shore's most sought after suburbs, located in a boutique building of only eight apartments.

- Open plan living, polished timber flooring, carpet in bedrooms
- Both bedrooms with built in wardrobes
- Living area flows onto a spacious balcony, northerly aspect
- Kitchen with gas cooking, dishwasher
- Modern bathroom with separate bath and shower
- Common garden area ideal for entertaining
- Large lock up garage for one vehicle
- Ample visitor parking at the front of the block
- Air conditioning

View : <https://www.thepropertylab.com.au/lease/nsw/north-shore-lower/naremburn/residential/apartment/6198007>



Gerard Marino
1300 048 125